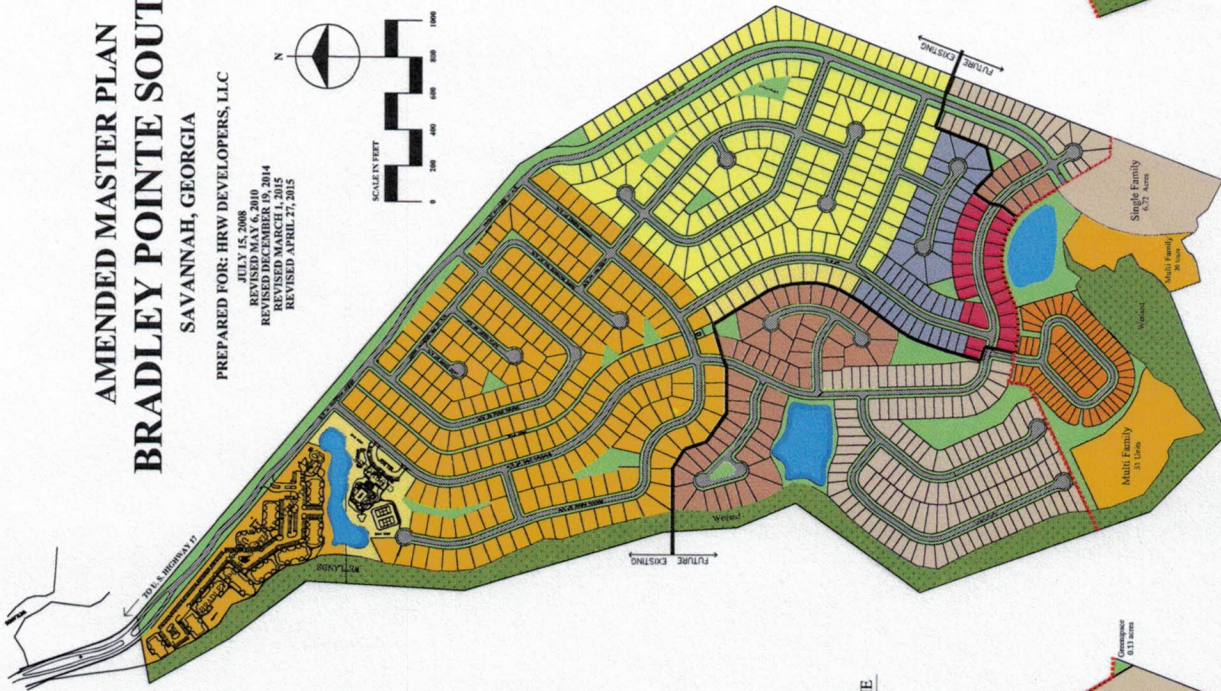
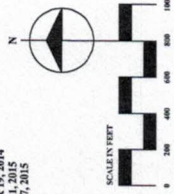


AMENDED MASTER PLAN BRADLEY POINTE SOUTH

SAVANNAH, GEORGIA

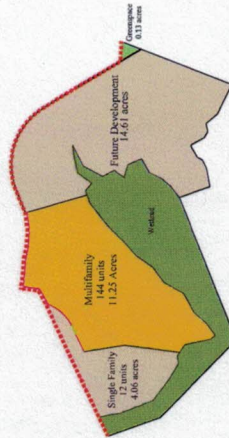
PREPARED FOR: HRW DEVELOPERS, LLC

JULY 15, 2008
 REVISED JANUARY 10, 2010
 REVISED DECEMBER 19, 2014
 REVISED MARCH 1, 2015
 REVISED APRIL 27, 2015



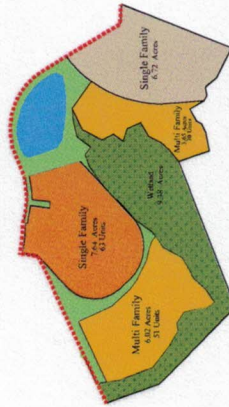
ORIGINAL USES SOUTH OF BROKEN LINE

- Multi-Family- 11.25 acres
- Single Family- 4.06 acres
- Future Development- 14.61 acres
- Green Space- 0.13 acres
- Wetland- 9.38 acres



AMENDED USES SOUTH OF BROKEN LINE

- Multi-Family- 9.67 acres
- Single Family- 14.36 acres
- Green Space- 6.02 acres
- Wetland- 9.38 acres



SEA DRIFT



A



B



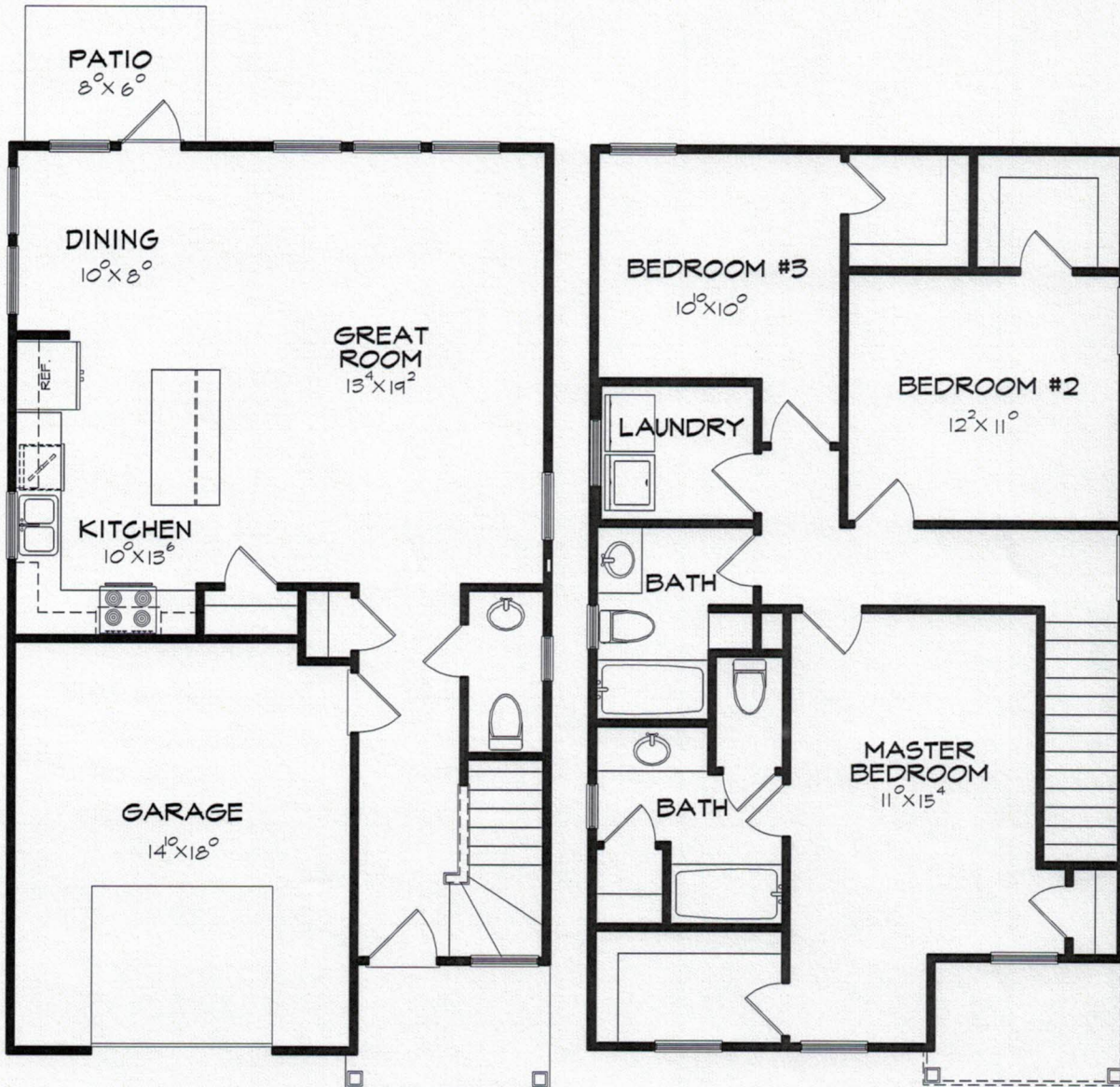
LANDMARK
HOMES



2702 Whatley Avenue, Savannah, GA, 31404
912-353-1275 Landmark24.com

SEA DRIFT

3 Bedrooms, 2.5 Baths



FIRST FLOOR

SECOND FLOOR

10-07-13

LANDMARK 24
HOMES

2702 Whatley Avenue, Savannah, GA, 31404
912-353-1275 Landmark24.com

Plans and Elevations are artists renderings and may contain options which are not standard on all models. We reserve the right to make changes to these floor plans, specifications, dimensions and elevations without prior notice. Stated dimensions and square footage are approximate. The standard features in a home may vary from one community to another. These plans are property of Landmark 24 Homes of Georgia, Inc. They are protected by copyright laws of the United states. Any reproduction of these plans without permissions is a violation of US copyright laws. Marketed by Landmark 24 Realty, Inc.



HARBORSIDE



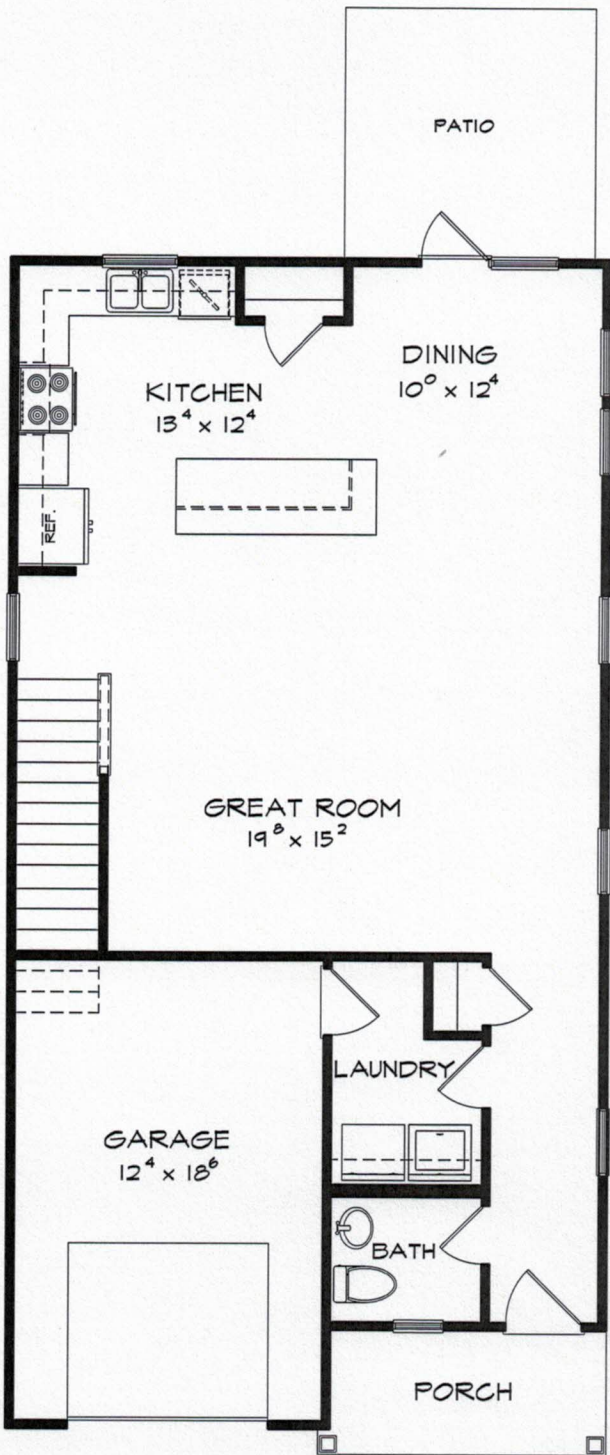
LANDMARK
HOMES



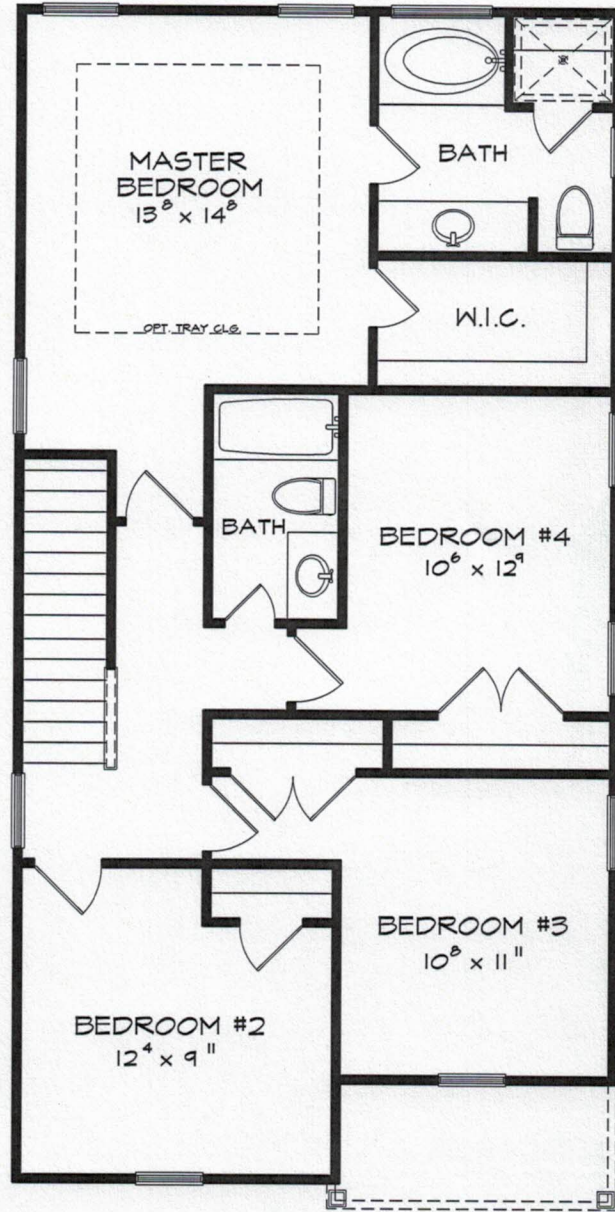
2702 Whatley Avenue, Savannah, GA, 31404
912-353-1275 Landmark24.com

HARBORSIDE

4 Bedrooms, 2.5 Baths



FIRST FLOOR



SECOND FLOOR

6-11-14

LANDMARK 24
HOMES

2702 Whatley Avenue, Savannah, GA, 31404
912-353-1275 Landmark24.com

Plans and Elevations are artists renderings and may contain options which are not standard on all models. We reserve the right to make changes to these floor plans, specifications, dimensions and elevations without prior notice. Stated dimensions and square footage are approximate. The standard features in a home may vary from one community to another. These plans are property of Landmark 24 Homes of Georgia, Inc. They are protected by copyright laws of the United States. Any reproduction of these plans without permissions is a violation of US copyright laws. Marketed by Landmark 24 Realty, Inc.



KENNEBUNK



A



B



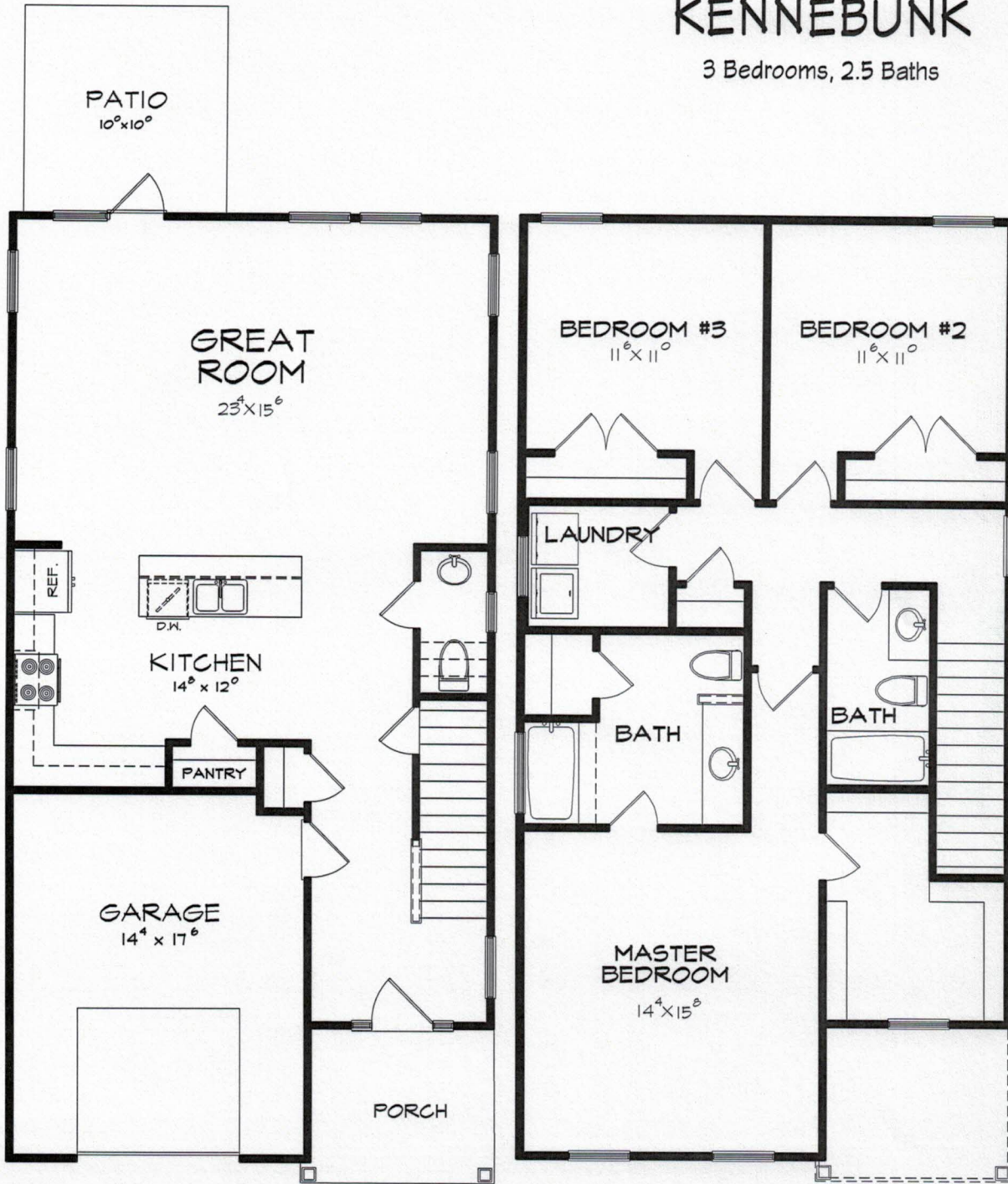
LANDMARK
HOMES



2702 Whatley Avenue, Savannah, GA, 31404
912-353-1275 Landmark24.com

KENNEBUNK

3 Bedrooms, 2.5 Baths



FIRST FLOOR

SECOND FLOOR

7-01-14

LANDMARK
HOMES

2702 Whatley Avenue; Savannah, GA, 31404
912-353-1275 Landmark24.com

Plans and Elevations are artists renderings and may contain options which are not standard on all models. We reserve the right to make changes to these floor plans, specifications, dimensions and elevations without prior notice. Stated dimensions and square footage are approximate. The standard features in a home may vary from one community to another. These plans are property of Landmark 24 Homes of Georgia, Inc. They are protected by copyright laws of the United States. Any reproduction of these plans without permission is a violation of US copyright laws. Marketed by Landmark 24 Realty, Inc.

